



# THIN SHEET NUT-INSERT

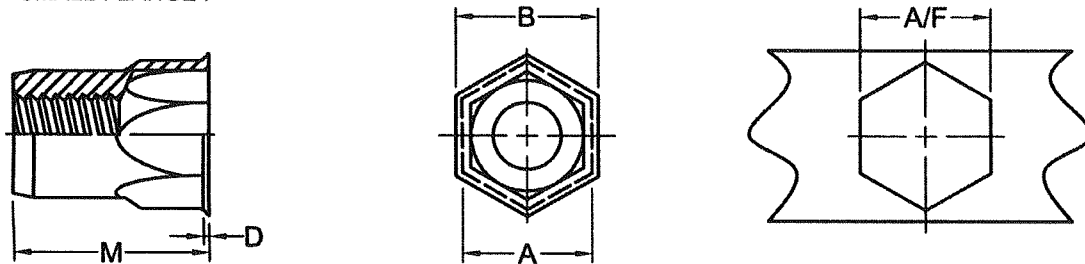
## SPECIFICATIONS

MATERIAL : LOW CARBON STEEL

【 HALF-HEX TYPE 】

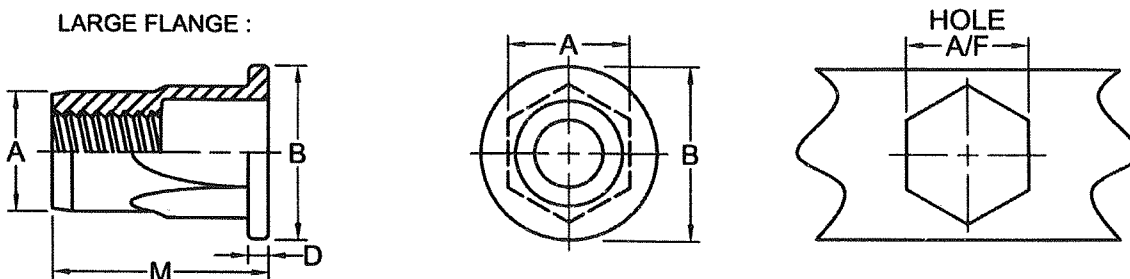
FINISH : ZINC CLEAR CR III

SMALL FLANGE :



ITEM NO.	THREAD SIZE		GRIP RANGE	HEX HOLE A/F (+0.1)	A -0.15	B ±0.3	D ±0.1	M ±0.25
	Metric	Inch						
HA SM4	M4x0.7	8-32	0.50~2.50	6.40	6.35	7.00	0.40	10.40
HA SM5	M5x0.8	10-32	0.50~3.00	7.20	7.10	8.10	0.50	12.00
HA SM6	M6x1.0	1/4-20	0.70~3.30	9.60	9.50	10.50	0.50	14.50
HA SM8	M8x1.25	5/16-18	0.70~3.30	10.60	10.50	11.50	0.50	16.00
HA SM10	M10x1.5	3/8-16	1.00~3.50	12.70	12.70	14.00	0.50	18.80

LARGE FLANGE :



ITEM NO.	THREAD SIZE	GRIP RANGE	HEX HOLE A/F(+0.2)	A -0.15	B ±0.3	D ±0.2	M ±0.25
HA LM5	M5 x 0.8	0.5~3.0	7.00	7.00	10.00	1.00	13.80
HA LM6	M6 x 1.0	0.5~3.0	9.00	9.00	13.00	1.50	16.00
HA LM8	M8 x 1.25	0.5~3.0	11.00	11.00	16.00	1.50	18.00
HA LM10	M10 x 1.50	1.0~4.5	13.00	13.00	19.00	2.00	24.00

Note : The inside hole of HA LM4 is Hexagon hole not round hole