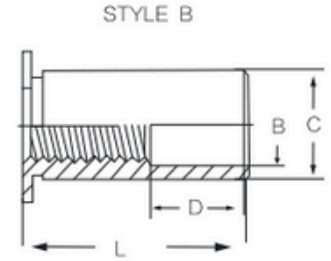
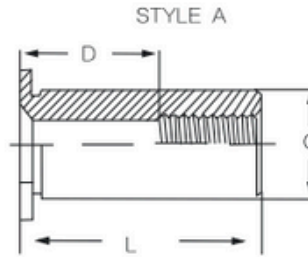
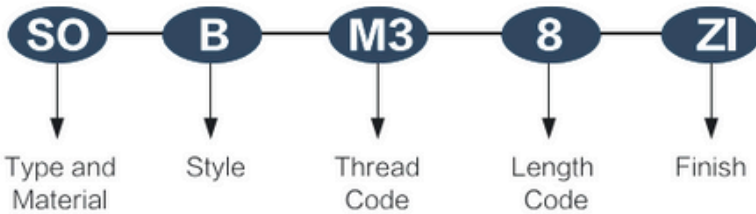


# SO / SOS

## 通孔压铆螺母柱 THRU-HOLE THREAD STANDOFFS



### Part Number Designation



Thread Code	Rec Min. Sheet Thickness	C -.005	H Nom.	B ±.005	Hole size In Sheet +.003
440	.040	.165	.187	.125	.166
6440	.040	.212	.250	.125	.213
632	.040	.212	.250	.156	.213
8632	.050	.280	.312	.156	.281
832	.050	.280	.312	.188	.281
032	.050	.280	.312	.203	.281

Thread Code	Rec Min. Sheet Thickness	C -0.13	H Nom.	B ±0.13	Hole size In Sheet +0.08
M2.5	1.02	4.2	4.75	3.0	4.22
M3	1.02	4.2	4.75	3.2	4.22
3.5M3	1.02	5.39	6.35	3.2	5.41
M3.5	1.02	5.39	6.35	3.9	5.41
M4	1.27	5.98	7.0	4.8	6.0
3.5M4	1.27	7.12	8.0	4.8	7.14
M5	1.27	7.12	8.0	5.35	7.14
M6	1.3	8.72	10.0	6.4	8.75

All dimensions are in inches (Size Unit: inch)

Thread Size	Type			Thread Code	Length "L" +.002-.005 (Length code is in 32ths of an inch)													Min. Dist Hole C/L To Edge
	Steel	Stainless Steel	Aluminum		.125	.187	.250	.312	.375	.437	.500	.562	.625	.687	.750	.812	.875	
.112-40 (#4-40)	SO	SOS	SOA	440	4	6	8	10	12	14	16	18	20	22	/	/	/	0.23
				6440														
.138-32 (#6-32)	SO	SOS	SOA	632	4	6	8	10	12	14	16	18	20	22	24	26	28	0.27
				8632														
.164-32 (#8-32)	SO	SOS	SOA	832	4	6	8	10	12	14	16	18	20	22	24	26	28	0.31
.190-32 (#10-32)	SO	SOS	SOA	032	4	6	8	10	12	14	16	18	20	22	24	26	28	0.31
D Dimension ±.010					None			.187			.312			.437				

All dimensions are in millimeters (Size Unit: mm)

Thread Size	Type			Thread Code	Length "L" +0.05-0.13 (Length Code is in millimeters)													Min. Dist Hole C/L To Edge
	Steel	Stainless Steel	Aluminum		3	4	6	8	10	12	14	16	18	/	/	/	/	
M2.5X0.45	SO	SOS	SOA	M2.5	3	4	6	8	10	12	14	16	18	/	/	/	/	6
M3X0.5	SO	SOS	SOA	M3	3	4	6	8	10	12	14	16	18	/	/	/	/	6
				3.5M3														6.8
M3.5X0.6	SO	SOS	SOA	M3	3	4	6	8	10	12	14	16	18	/	/	/	/	6.8
M4X0.7	SO	SOS	SOA	M4	3	4	6	8	10	12	14	16	18	20	22	25	/	7.5
				3.5M4														8
M5X0.8	SO	SOS	SOA	M5	3	4	6	8	10	12	14	16	18	20	22	25	/	8
M6X1.0	SO	SOS	SOA	M6	3	4	6	8	10	12	14	16	18	20	22	25	/	9
D Dimension ±0.25					None			4			8			11				